

GBPC25005 THRU GBPC2510

**SINGLE PHASE GLASS
PASSIVATED BRIDGE RECTIFIER**
VOLTAGE: 50 to 1000V **CURRENT: 25.0A**



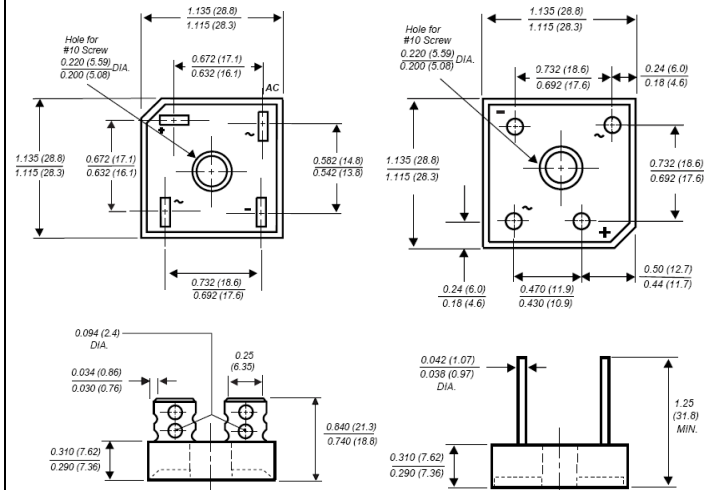
FEATURE

Surge overload rating: 300 A peak
 low profile design
 1/4" Universal fast on terminal and
 φ40 mil lead-wire available

MECHANICAL DATA

Polarity: Polarity symbol marked on body
 Mounting: Hole thru for # 10 screw

GBPC/GBPCW



Dimensions in inches and (millimeters)

MAXIMUM RATINGS AND ELECTRICAL CHARACTERISTICS

(single-phase, half -wave, 60HZ, resistive or inductive load rating at 25°C, unless otherwise stated)

| | SYMBOL | GBPC2 5005 | GBPC2 501 | GBPC2 502 | GBPC2 504 | GBPC2 506 | GBPC2 508 | GBPC2 510 | units |
|---|--------------------|---------------|--------------|--------------|--------------|--------------|--------------|--------------|----------|
| Maximum Recurrent Peak Reverse Voltage | V _{rrm} | 50 | 100 | 200 | 400 | 600 | 800 | 1000 | V |
| Maximum RMS Voltage | V _{rms} | 35 | 70 | 140 | 280 | 420 | 560 | 700 | V |
| Maximum DC blocking Voltage | V _{dc} | 50 | 100 | 200 | 400 | 600 | 800 | 1000 | V |
| Maximum Average Forward Rectified Current at Ta=50°C | I _{f(av)} | 25.0 | | | | | | | A |
| Peak Forward Surge Current 8.3ms single Half sine-wave superimposed on rated load | I _{fsm} | 300.0 | | | | | | | A |
| Maximum Instantaneous Forward Voltage at Forward current 12.5A | V _f | 1.1 | | | | | | | V |
| Maximum DC Reverse Current Ta =25°C at rated DC blocking voltage Ta =100°C | I _r | 10.0 500.0 | | | | | | | μA μA |
| Operating Temperature Range | T _j | -55 to +125 | | | | | | | °C |
| Storage and Operation Junction Temperature | T _{stg} | -55 to +150 | | | | | | | °C |

Note:
 Suffix "W" for wire type

RATINGS AND CHARACTERISTIC CURVES GBPC25005 THRU GBPC2510

FIG. 1 - MAXIMUM OUTPUT RECTIFIED CURRENT

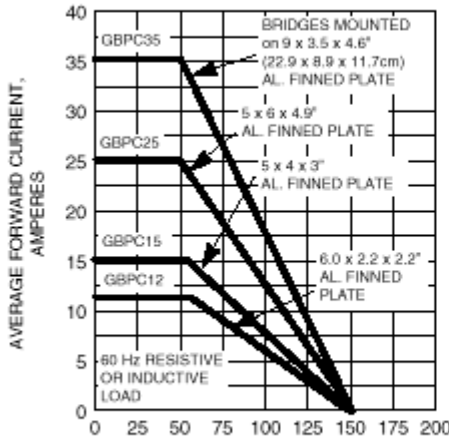


FIG. 2 - MAXIMUM OUTPUT RECTIFIED CURRENT

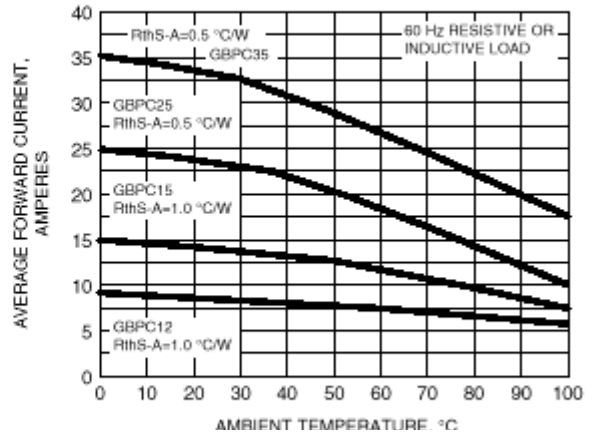


FIG. 3 - MAXIMUM POWER DESCRIPTION

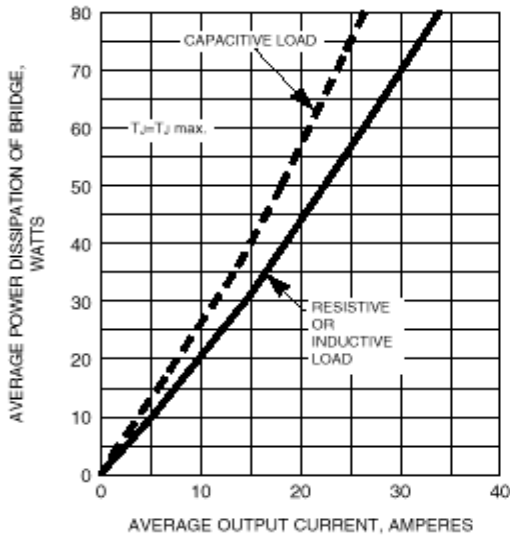


FIG. 4 - MAXIMUM NON-REPETITIVE PEAK FORWARD SURGE CURRENT PER LEG

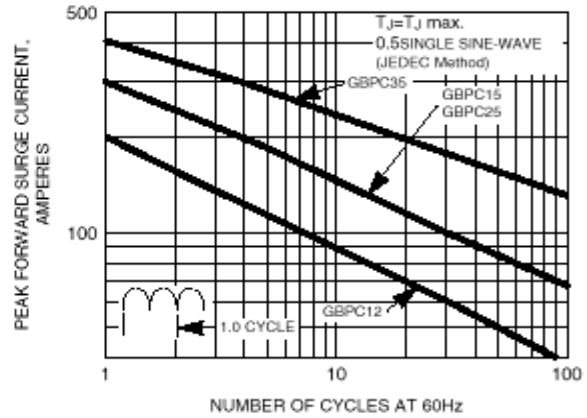


FIG. 5 - TYPICAL INSTANTANEOUS FORWARD CHARACTERISTICS PER LEG

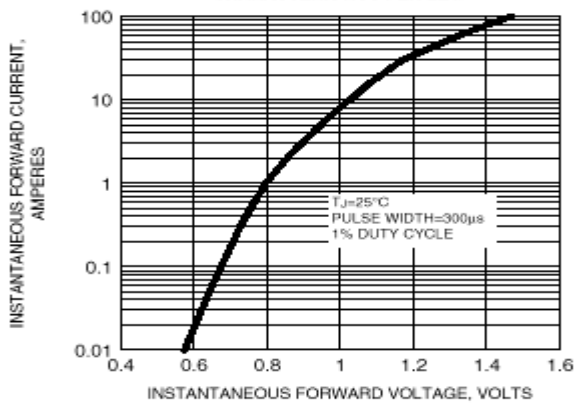


FIG. 6 - TYPICAL REVERSE LEAKAGE CHARACTERISTICS PER LEG

