

HER501 THRU HER508

**HIGH EFFICIENT
PLASTIC SILICON RECTIFIER**
VOLTAGE:50 TO 1000V CURRENT: 3.0A

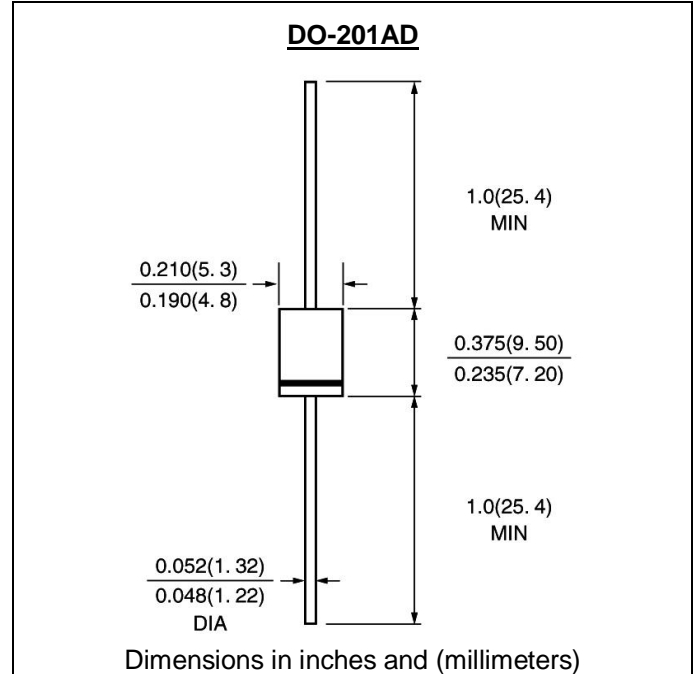


FEATURE

Low power loss
High surge capability
Ultra-fast recovery time for high efficiency
High temperature soldering guaranteed
250°C/10sec/0.375"lead length at 5 lbs tension

MECHANICAL DATA

Terminal:Plated axial leads solderable per MIL-STD 202E, method 208C
Case:Molded with UL-94 Class V-0 recognized Flame Retardant Epoxy
Polarity:color band denotes cathode
Mounting position:any



MAXIMUM RATINGS AND ELECTRICAL CHARACTERISTICS

(single-phase, half -wave, 60HZ, resistive or inductive load rating at 25°C, unless otherwise stated)

	SYMBOL	HER 501	HER 502	HER 503	HER 504	HER 505	HER 506	HER 507	HER 508	units	
Maximum Recurrent Peak Reverse Voltage	V _{rrm}	50	100	200	300	400	600	800	1000	V	
Maximum RMS Voltage	V _{rms}	35	70	140	210	280	420	560	700	V	
Maximum DC blocking Voltage	V _{dc}	50	100	200	300	400	600	800	1000	V	
Maximum Average Forward Rectified Current 3/8"lead length at Ta =50°C	I _{f(av)}	3.0								A	
Peak Forward Surge Current 8.3ms single half sine-wave superimposed on rated load	I _{fsm}	200					150			A	
Maximum Forward Voltage at Forward current 3A Peak	V _f	1.0			1.4		1.7			V	
Maximum DC Reverse Current at rated DC blocking voltage Ta =25°C Ta =100°C	I _r	10.0					100.0				μA μA
Maximum Reverse Recovery Time (Note 1)	T _{rr}	50					75				nS
Typical Junction Capacitance (Note 2)	C _j	70					50				pF
Typical Thermal Resistance (Note 3)	R(ja)	15.0								°C/W	
Storage and Operating Junction Temperature	T _{stg,Tj}	-50 to +150								°C	

Note:

- Reverse Recovery Condition I_f =0.5A, I_r =1.0A, I_{rr} =0.25A
- Measured at 1.0 MHz and applied reverse voltage of 4.0Vdc
- Thermal Resistance from Junction to Ambient at 3/8"lead length, P.C. Board Mounted

RATINGS AND CHARACTERISTIC CURVES HER501 THRU HER508

1

FIG. 1 - TEST CIRCUIT DIAGRAM AND REVERSE RECOVERY TIME CHARACTERISTIC

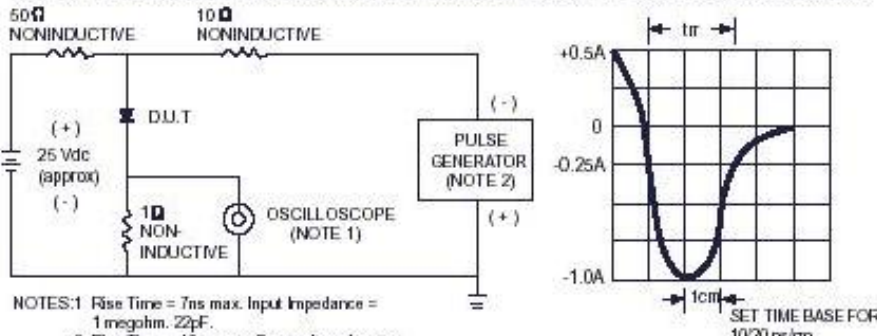


FIG. 2 - TYPICAL FORWARD CURRENT DERATING CURVE

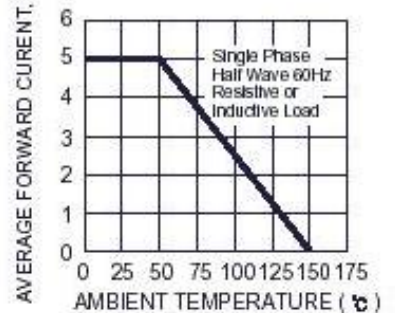


FIG. 3 - TYPICAL REVERSE CHARACTERISTICS

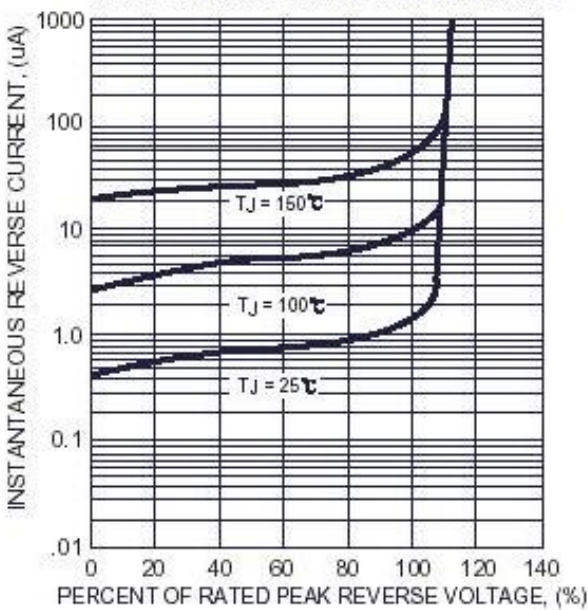


FIG. 4 - TYPICAL INSTANTANEOUS FORWARD CHARACTERISTICS

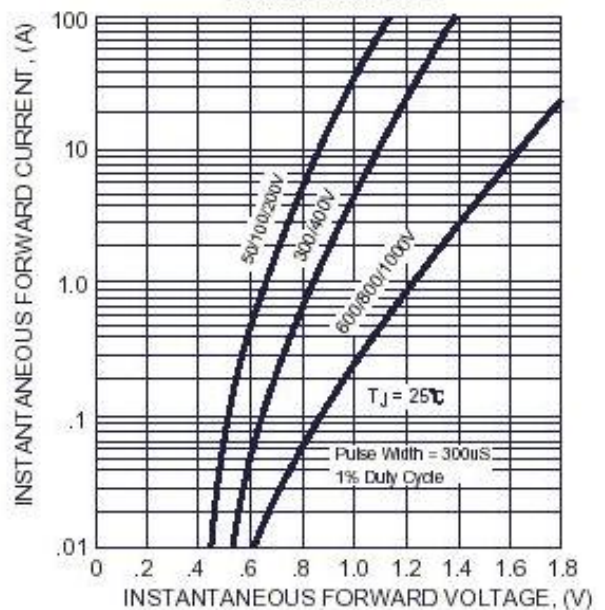


FIG. 5 - MAXIMUM NON-REPETITIVE FORWARD SURGE CURRENT

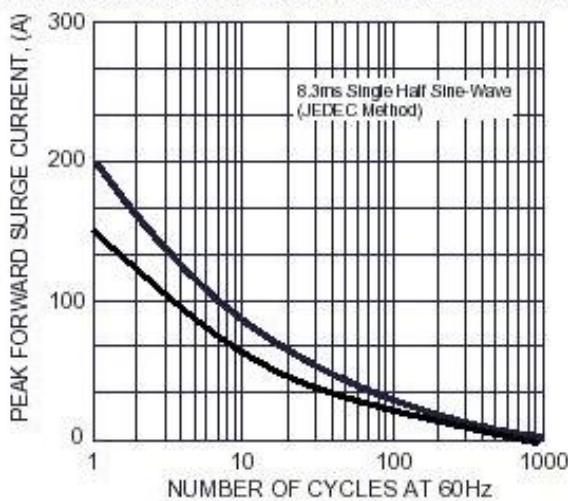


FIG. 6 - TYPICAL JUNCTION CAPACITANCE

