

# UG2KB80-1

## SINGLE PHASE GLASS PASSIVATED BRIDGE RECTIFIER

Voltage: 800V

Current: 2.0A



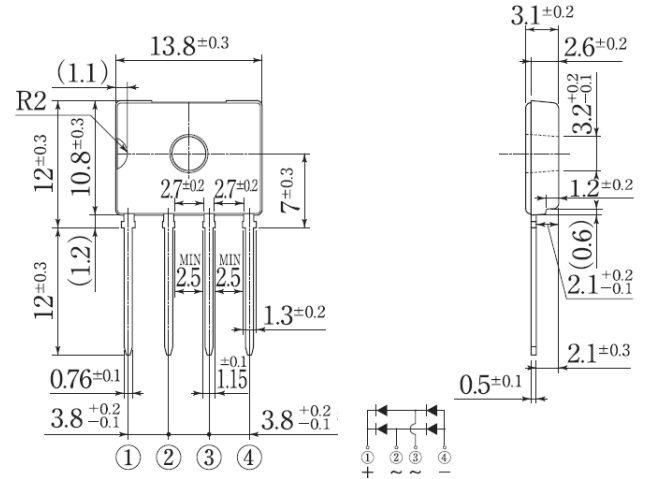
### Features

Glass passivated chip junction  
High case dielectric strength  
High surge current capability  
Ideal for printed circuit board

### Mechanical Data

Terminal: Plated leads solderable per J-STD-002  
Case: UL-94 Class V-0 recognized Flame Retardant Epoxy  
Polarity: Polarity symbol marked on body  
Mounting position: any

### D3K



Dimensions in millimeters

### MAXIMUM RATINGS AND ELECTRICAL CHARACTERISTICS

(single-phase, half -wave, 60HZ, resistive or inductive load rating at 25°C, unless otherwise stated)

	Symbol	UG2KB80-1	units
Maximum repetitive peak reverse voltage	V <sub>rrm</sub>	800	V
Maximum RMS voltage	V <sub>rms</sub>	560	V
Maximum DC blocking voltage	V <sub>dc</sub>	800	V
Maximum average forward rectified output current T <sub>c</sub> 143°C with heatsink	I <sub>f(av)</sub>	2.0	A
Peak forward surge current single sine-wave superimposed on rated load (JEDEC Method)	I <sub>fsm</sub>	62	A
Maximum instantaneous forward voltage drop per leg at 1.0A	V <sub>f</sub>	1.05	V
Rating for fusing (3ms ≤ t < 8.3ms)	I <sup>2</sup> t	16	A <sup>2</sup> Sec
Maximum DC reverse current at rated DC blocking voltage per leg	I <sub>r</sub>	10.0 500	μA
Thermal resistance	without heatsink	R <sub>th(ja)</sub>	55
	with heatsink	R <sub>th(jc)</sub>	1.5
	without heatsink	R <sub>th(jl)</sub>	15
Operating junction and storage temperature range	T <sub>j</sub> , T <sub>stg</sub>	-55 to +150	°C

Note:

## RATINGS AND CHARACTERISTIC CURVES UG2KB80-1

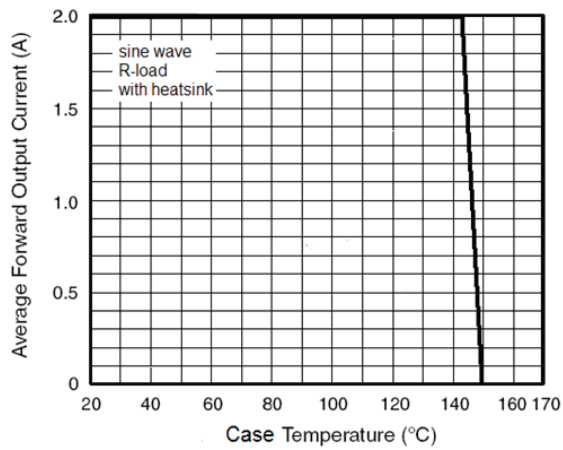


Figure 1. Derating Curve Output Rectified Current

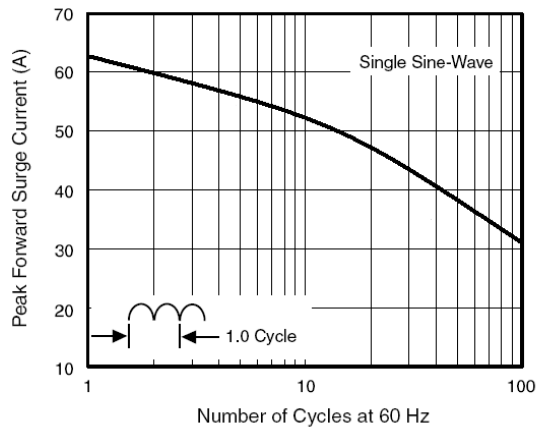


Figure 2. Maximum Non-Repetitive Peak Forward Surge Current Per Diode

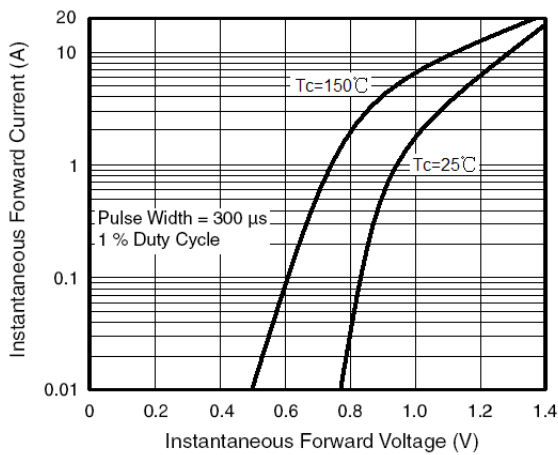


Figure 3. Typical Forward Characteristics Per Diode

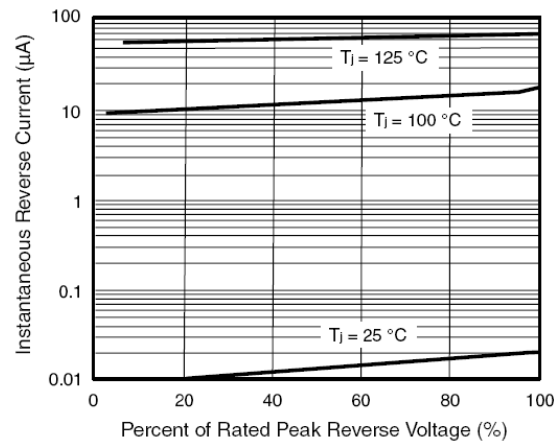


Figure 4. Typical Reverse Leakage Characteristics Per Diode

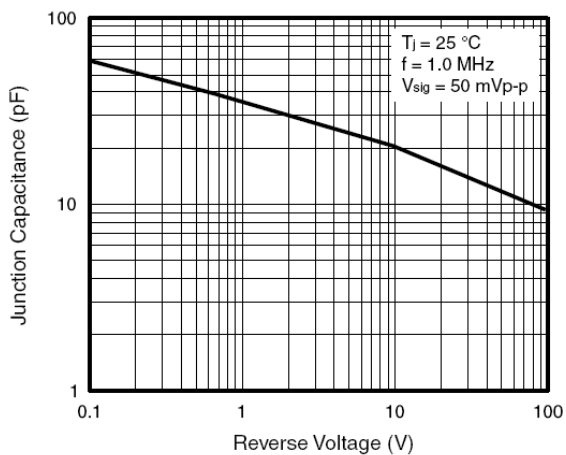


Figure 5. Typical Junction Capacitance Per Diode